

Mobile house

· TECHNICAL ASPECT:

Structure, description, content, characteristics

· OBJECT -

■ Floor:

$U = 0.258 \text{ W/m}^2\text{K}$

Layers (from indoor to outdoor):

Final layer	6 to 14	mm
OSB board	12	mm
OSB board	15	mm
Timber construction	160	mm
Mineral wool	160	mm
OSB board	12	mm
Waterproofing		

Thickness: ≈ 210 mm



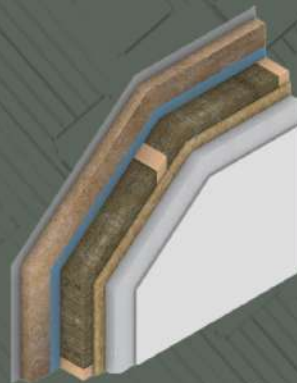
■ Facade wall:

$U = 0.190 \text{ W/m}^2\text{K}$

Layers (from indoor to outdoor):

Plasterboard	12.5	mm
Substructure for plasterboard	50	mm
Mineral wool	50	mm
Vapour barrier	0.3	mm
Timber construction	120	mm
Rockwool	120	mm
OSB board	12	mm
Styrofoam	50	mm
Final layer	10	mm

Thickness: ≈ 260 mm



■ Partition wall:

Layers (from indoor to outdoor):

Plasterboard	12.5	mm
Timber construction + Acoustic insulation	80	mm
Plasterboard	12.5	mm

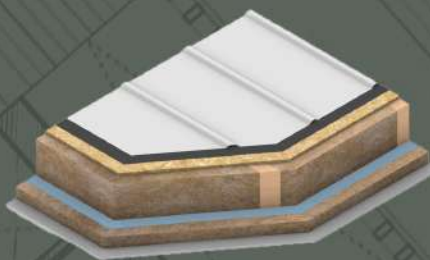
■ Roof:

$U = 0.208 \text{ W/m}^2\text{K}$

Layers (from outdoor to indoor):

Folded metal sheet	0.5	mm
Waterproofing		
OSB board	15	mm
Timber construction	160	mm
Mineral wool	160	mm
Vapour barrier	0.3	mm
Substructure for plasterboard	50	mm
Mineral wool	50	mm
Plasterboard	12.5	mm

Thickness: ≈ 240 mm



■ Facade carpentry:

PVC carpentry with aluminium covering from the outside
Three-layer glass / ROTO window frame / Aluminium sloped sill



· DECK-

- Larch decking / wood oil protection / Aluminium substructure
Timber floor construction frame placed on the metal beams
Roof construction on the timber studs / lining on the underside - decking / oil protection / waterproofing on the deck roof - EPDM
Pergola

Mobilna kuća

TEHNIČKI ASPEKT:

Struktura, opis, sadržaj, karakteristike

OBJEKAT -

Podna ploča:

$U = 0.258 \text{ W/m}^2\text{K}$

Slojevi (unutra ka spolja):

Završni sloj poda	6 do 14	mm
OSB ploča	12	mm
OSB ploča	15	mm
Konstruktivni deo poda	160	mm
mineralna vuna	160	mm
OSB ploča	12	mm
Hidroizolacija		

Debljina: ≈ 210 mm



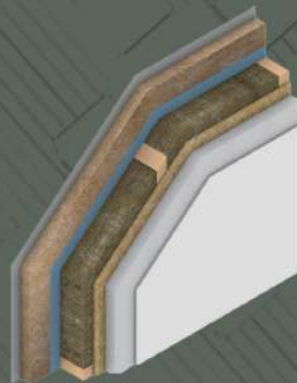
Fasadni zid:

$U = 0.190 \text{ W/m}^2\text{K}$

Slojevi (unutra ka spolja):

Gipskarton ploča	12.5	mm
Potkonstrukcija za gipskarton ploče	50	mm
Mineralna vuna	50	mm
Parna brana	0.3	mm
Konstruktivni deo zida	120	mm
Kamena vuna	120	mm
OSB ploča	12	mm
Fasadni stiropor	50	mm
+ slojevi kontaktne fasade		
Završni sloj kontaktne fasade	10	mm

Debljina: ≈ 260 mm



Pregradni zid:

Slojevi (unutra ka spolja):

Gipskarton ploča	12.5	mm
Konstrukcija od drveta	80	mm
+ zvučna izolacija		
Gipskarton ploča	12.5	mm

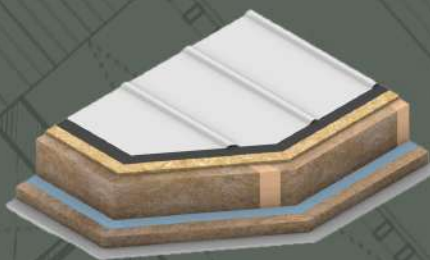
Krovn konstrukcija:

$U = 0.208 \text{ W/m}^2\text{K}$

Slojevi (spolja ka unutra):

Falcovan lim	0.5	mm
Hidroizolacija		
OSB ploča	15	mm
Konstruktivni deo krova	160	mm
mineralna vuna	160	mm
Parna brana	0.3	mm
Potkonstrukcija za gipskarton ploče	50	mm
mineralna vuna	50	mm
Gipskarton ploče	12.5	mm

Debljina: ≈ 240 mm



Fasadna stolarija:

PVC stolarija sa Alu oblogom spolja
Troslojno staklo / ROTO okovi / aluminijumske okapnice



TERASA -

Deking daska od Ariša / zaštita uljem / potkonstrukcija od aluminijuma

Podna konstrukcija od drveta u montažnim elementima postavljena na metalne nosače
Krovn konstrukcija od drveta na stubovima / obloga donje strane - brodski pod / zaštita uljem / hidroizolacija krova terase EPDM

Pergole - nosači platnenog zastora na terasama koje imaju otvor u krovu